

Sentinel-Times

AUTUMN 2023

DISCOVER

South Gippsland and Bass Coast



LIVE MUSIC & MARKETS

Gippsland Country
Music Festival | p. 45

DISCOVER WHAT'S ON THIS EASTER

Egg hunts, art shows and
fishing competitions

TOP TRAILS FOR WALKING & RIDING

Going the distance on our
great rail trails | p. 48



FROM THE MOUNTAINS TO THE SEA

CLASSIC GOOD SERVICE

Since 1886

For more than 130 years, Alex Scott and Staff has been proud to be part of the growth and success of our communities. As autumn approaches, we look forward to a refreshing change, a bounty of changing colours and exciting new opportunities. Interest in our beautiful region continues to grow, especially from those seeking a lifestyle change. Whether you're escaping the city, downsizing, upsizing or investing, our experienced team are here to help you realise your aspirations this autumn. If you want to make a move in Gippsland, talk to a friendly and experienced local at Alex Scott and Staff.

Melbourne (03) 8680 2545	Inverloch (03) 5674 1111	Lang Lang (03) 5997 5599	Phillip Island (03) 5952 2633	Venus Bay (03) 5663 7111
Berwick (03) 9707 2000	Koo Wee Rup (03) 5997 2133	Leongatha (03) 5662 0922	Sale (03) 5655 2480	Warragul (03) 5623 4744
Grantville (03) 5678 8433	Korumburra (03) 5655 1133	Pakenham (03) 5941 1111	San Remo (03) 5678 5408	Wonthaggi (03) 5672 1911

CLASSIC GOOD SERVICE
SINCE
1886



ALEXSCOTT.COM.AU



Rich History of sustainable seafood



General Manager of the San Remo Fisherman's Co-op Paul Mannix provides fresh cray and gummy shark directly off their own vessels at the San Remo jetty.



The San Remo Fisherman's Co-op continue their daily 12pm pelican feeding down on the San Remo foreshore, a tradition that began in 1985.

THE San Remo Fisherman's Co-op are renowned for their fish and chips, fresh seafood and pelican feeding.

And with a rich history in the town of San Remo, it's the perfect stop off during the Easter break.

General Manager Paul Mannix and the local team source fresh seafood from their own fleet of fish and lobster vessels; the vessels carry a range of fisherman that specialise in shark, cray, octopus, scallops, and wrasse fishing.

"When visiting San Remo, take a stroll to the San Remo jetty and you'll see firsthand the vessels unloading their fresh catch that is delivered straight into our store," said Paul.

The San Remo Fisherman's Co-op is cooperatively owned by the fisherman and managed by locals, with financial proceeds going directly to the fisherman to help with the everyday operation of their vessels, and the additional profits fund the maintenance of the sustainable business, including the upkeep of gear and the ongoing unloading costs for the fisherman.

"Sourcing our seafood from our very own fleets, allows us to provide sustainably caught

gummy shark from local Bass Strait waters straight to our customers either fresh or cooked."

Also available fresh daily, Paul and the team have a substantial display of Southern Rock Lobster – sustainably fished by member's vessels and available both live and cooked, king prawns, oysters and an ever changing variety of fresh fish including the local secret, duckfish.

Renowned for their fish and chips featuring their own gummy shark, the Fisherman's Co-op menu is available for lunch and dinner from 10:30am supplying freshly cooked seafood, crispy chips, burgers, traditional favourites, as well as light and crisp side salads.

"We also offer a selection of crayfish that is available cooked to order and tasty season seafood specials, the perfect dishes for your Easter break."

When visiting San Remo, tourists and locals alike are welcome to sit back and watch the daily pelican feeding on the foreshore from 12pm noon. A tradition that dates to 1985.

"The pelican feeding not only helps educate the crowd

on important environmental efforts; including correct disposal of fishing line and hooks, but it allows our well-trained staff to keep an eye on the safety of the birds and help treat those that may have been injured in the wild," said Paul.

"Too often pelicans and seagulls are entangled in fishing line, sometimes causing significant damage and by having that daily interaction, our team can safely secure any injured birds for treatment at the Newhaven vet. They can then receive further treatment from Phillip Island Nature Parks rehabilitation centre if it's required, before being released."

Located on the San Remo foreshore overlooking the jetty, the San Remo Co-op also have an education centre that is open daily, giving visitors an insight into the town's fishing history.

Seafood and fish and chip orders can be made online at www.srfco.com.au with pick-up instore or by calling 5678 5206. The San Remo Co-op is open daily from 10:30am until 7:00pm, so stop off in San Remo this Easter and get a taste of the town's great history.



For everything you need this Easter

Owned and operated by locals, San Remo IGA offers local and gourmet lines

Come and shop our great range of groceries, fresh produce, fully-stocked deli, on-site butchers and liquor

shop online sanremoiga.com.au

OPEN 8AM – 8PM, 7 DAYS A WEEK

135 Marine Parade, San Remo • Phone 5678 5337

San Remo IGA



Take to the skies

and enjoy the view

THIS Easter walk the earth with your eyes turned skyward.

Phillip Island boasts breathtaking beauty with rugged coastlines, idyllic beaches, world class motorsports and an abundance of wildlife in its' natural habitat, and Phillip Island Helicopters provide the only bird's eye view of this spectacular scenery.

"We're open every day for locals and tourists to experience joy and adventure from one of the five different flights on offer, starting from only \$125 per person," said Lauren Mitchell of Phillip Island Helicopters, a multi-award-winning business that has been regularly recognised as the most popular tourism attraction in Bass Coast.

"Pilots Chad, Jason and Darcy will take to the skies this Autumn and showcase Phillip Island from a

different perspective - one that you can only get in the air."

Helicopter flights are available for those as young as eight years old; allowing children to experience lift off into the skies above and take in the impressive aerial views of the renowned seal rocks - home to Australia's largest seal colony, the Grand Prix Circuit - host to Moto GP, the state-of-the-art Penguin Parade, Cape Woolamai, and Victoria's beaches along Bass Coast.

A scenic flight is a once in a lifetime experience; an adventure to tick off the bucket list, a day-event to enjoy with family and friends.

"If you are looking to soar like a bird then book your joy flight over Bass Coast with Phillip Island Helicopters, you will not be disappointed."

Grab your camera and head to Veterans Drive, Newhaven today.



- Fresh Local seafood straight off the boats
- Fish, crays, scallops, octopus & more
- Scrumptious fish & chips

CO-OP
1948
FISHERMAN'S

OPEN 7 DAYS
SAN REMO JETTY
Ph 5678 5206 srfco.com.au

Why not check off your bucket list today!

PHILLIP ISLAND
HELICOPTERS

www.pih.com.au : 5956 7316

7th annual San Remo

EASTER FISHINGcompetition



ABOVE: George and Oliver competing in the small fry category for the annual Easter fishing competition.

Entries for the 2023 Easter fishing competition are open until April 7 with all entry funds donated to the Royal Childrens Hospital Good Friday Appeal.

Junior competitors are welcome to compete.

THE San Remo annual Easter fishing competition is running from April 7 until April 10, with 100% of the entry money donated to the Royal Childrens Hospital Good Friday Appeal.

For the past seven years, Jim's Bait and Tackle in San Remo has hosted the annual event inviting locals and visitors alike to participate in the competition for a good cause.

Event organisers Craig and Mel Edmonds said just for entering you have the chance to win one of 30 hourly prizes drawn over the weekend, with the major prize an 8-minute Phillip Island Helicopter flight for three people.

"The first 50 juniors or small fry to enter receive a show bag and the first 50 lady anglers receive a WIRFAB show bag," said Craig.

The categories for the event include adult - gummy, flathead, whiting, and squid. Ladies (18+) heaviest fish weighed by a lady (gummy, flathead, whiting and squid). Junior 11-14-year-old - gummy, flathead, whiting, and squid. Small Fry up to 11 years old - flathead, whiting, and squid, as well as an open category for the heaviest snapper.

"This competition is entering its 7th year with only one year missed due to COVID. The competition was started as a bit of

family friendly competition to raise money for the Royal Childrens Hospital Good Friday Appeal," said Craig.

"When it started, we had roughly five sponsors and about \$2000 in prizes, with 30 entrants, and last year we gave away of \$15,000 in prizes from 20+ sponsors with 160+ entrants, majority of which were kids."

The Easter fishing competition is part of a range of fundraisers happening throughout San Remo over Good Friday.

"The annual Walk for the Kids is also happening in San Remo which we work closely with and are part of the organising committee. We, like other fundraisers in town will combine the donations and it will all be donated as the township of San Remo, last year our part was around \$4,000," said Craig.

Presentations will be done virtually with the winners heading instore at the own convenience to pick up their winnings.

Registrations are open until 2pm on Good Friday, April 7, and all money will be donated to the appeal.

Entries are available via facebook.com/JimsBaitAndTackle, instore at 90 Back Beach Road, San Remo or over the phone by calling 5678 5462.

For more information visit www.jimsbaitandtackle.com.au



FRESH LOCAL SEAFOOD FOR EASTER



EASTER HOURS

Thursday 8.30am - 5pm
Good Friday 8.30am - 1pm
Easter Saturday 9am - 4pm
Easter Sunday 10am - 3pm
Easter Monday - closed

1/24-26 Boys Home Rd,
Newhaven Phone 5956 7980
Bass Strait Direct



ST. JOSEPH'S CHURCH | Dowling Street, Wonthaggi

Tuesday, April 4 2nd Rite of Reconciliation St. Joseph's Wonthaggi ... 7.00pm
Holy Thursday, April 6 St. Joseph's Wonthaggi 6.30pm
Good Friday, April 7 St. Joseph's Wonthaggi 3.00pm
Holy Saturday, April 8 Easter Vigil St. Joseph's Wonthaggi 6.30pm
Easter Sunday, April 9 St. Joseph's Wonthaggi 10.30am

OUR LADY STAR OF THE SEA CHURCH | Inverloch

Holy Thursday, April 6 Our Lady Star of the Sea, Inverloch 6.30pm
Good Friday, April 7 Our Lady Star of the Sea, Inverloch 3.00pm
Easter Sunday, April 9 Our Lady Star of the Sea, Inverloch 9.00am

St. Joseph's Parish wishes everyone an Easter Time of Peace and Joy.

Jim's BAIT AND TACKLE

Open daily from 6am over Easter

NEW SHOP NOW OPEN - 90 BACK BEACH ROAD

LOOKING FOR SOMETHING TO DO?

7TH ANNUAL SAN REMO EASTER FISHING COMPETITION

FRIDAY, APRIL 7 - MONDAY, APRIL 10

- **Small Fry Category's** for heaviest whiting, squid and flathead (10 and Under)
- **Junior Category's** for heaviest gummy, whiting, squid and flathead
- **Adult prizes** for the heaviest squid, whiting, flathead and gummy

100% of the entry fee will be donated to the Royal Children's Hospital Good Friday Appeal.

good Friday appeal THE ROYAL CHILDREN'S HOSPITAL

For more information Mobile: 0409 018 980 Phone: 5678 5462
e: fishing@jimsbaitandtackle.com.au w: www.jimsbaitandtackle.com.au

f i

PADDOCK

to plate at Macca's Farm



WHETHER you are looking to entertain the family or yourself for five minutes or five hours there is a host of activities to enjoy at Macca's Farm.

Subconsciously you breathe a little deeper as you turn down the driveway – the fresh Autumn air through the windows, the lake teaming with local wildlife, the piglets running across the driveway – you're whisked away to the splendour of working farm life.

Jumping from the car head inside for a bucket, it's still strawberry picking season. Rows of fresh strawberries are yours for the taking – but beware one bucket may only last the night... or even 10 minutes.

Let the kids, young and old, laugh and move through the green grass as they chase the biggest and juiciest red berries; you may also make a few more friends in the piglets that follow.

Listening to the sweet sounds of nature it's time to put your feet up and indulge at the delicious paddock to plate cafe. Sit outside and bask in the ambiance as you sip on a select vintage, or if the weather is less than favourable there's always inside...

With seasonal specials plus everything you love, be transported by delicious meals, whether for breakfast, lunch or brunch...

Finish up with a coffee and something sweet.

When you're bursting at the seams,

head next door to the Produce Store. Brimming with a delicious mix of supplies for the week ahead including readymade meals.

Stock up on hydroponic vegetables fresh from the paddocks, farm butchered free-range Angus beef and Wessex-Saddleback pork, and locally sourced free-range lamb, honey, jams, cheeses and biscuits.

From regular supplies to the delightful picnic basket kind, fill up your boxes and embrace eating and supporting local.

Better yet recreate your own memories reminiscent of faraway countries – fresh Mediterranean salads made of spray free tomatoes, cucumber, onions and lettuce, topped with artisan cheese and drizzled with olive oil or even a dash of honey for the sweet tooths. For the cooler nights a warming ratatouille that can be enjoyed cold the next day under the Autumn sun.

Reduce your carbon footprint as you stock up on farm butchered bacon, ham and smallgoods too – knowing exactly where it all comes from.

Macca's Farm really does bring the finest fresh produce from their paddocks and across South Gippsland to one place, at your fingertips. Head out for the day, a couple of hours or a quick stop for your weekly fresh produce.

EXPERIENCE AUTUMN TIME ON MACCAs FARM

*Great fun
for the
whole family!*

- Pick your own strawberries – delicious!
- View our roaming farm animals
- Relax over a delicious meal from our café
- Fresh produce grown on the farm
- On-farm butchery offering free range beef, pork and in-house smoked small goods – all direct from the farm and locally sourced lamb



OPEN 5 DAYS Wednesday to Sunday
Café 9am – 3pm • Shop 9am – 5pm

2185 Dalyston-Glen Forbes Road, Glen Forbes
(Just off Bass Highway, turn at Van Steensel Timbers)

Phone Angelika 0437 367 622



HMT0153

HAPPY EASTER SPECIALS \$\$\$

 Sheet set, king size our price only \$94.00 Don't pay \$289.99	 Slippers \$14.99
 Shoes our price only \$19.95 Don't pay \$99.95	 Super soft throws our price only \$14.99 Don't pay \$50.00
 Swimwear \$15.00 Beach towel \$10.00 Sunglasses \$5.99 After sun gel \$3.99	 Ladies PJ's \$15.99 Slippers \$14.99 Cotton throw \$14.99
 Men's trackpants \$14.99 Men's top \$9.99 Slippers \$14.99	 Men's shorts from \$5.99

Always a bargain at

DIMMEYS @
ALWAYS A BARGAIN



FOOD | MANCHESTER
CLOTHING | FURNISHING
HOMEWARE | TOYS

209-213 Settlement Road, Cowes Ph: 5611 1999

Dimmeyscowes



Autumn at the NATURE PARKS

AS WE head into Autumn the breeding season comes to an end on Millowl (Phillip Island) and it's time for many of our species to prepare for migration.

With the air turning cooler the natural world responds to the change in temperature from the ground to the skies.

Read on to find out about what is going on behind the scenes at Phillip Island Nature Parks and what to look out for over the autumnal months.

In The Skies - Birdlife

Short-tailed shearwaters leave our shores

Autumn is a time when adult Short-tailed shearwaters are leaving our shores to begin the long flight to the Bering Strait near Alaska starting with a trip south to feed in the rich waters around Antarctica before heading north. They leave their fat, fluffy chicks behind in the burrows where they lose weight and grow their adult flight feathers. In late April/early May, they will take off to commence their own migration. When the chicks take these practise flights, they often land on roads at night as they are attracted to bright lights, or can end up in unusual places, even your backyard.

The 'Dark Sky So Shearwaters Fly' campaign commences in April to encourage residents and businesses to turn off outdoor lighting during the take off period. Key areas within the flight path include Surf Beach, Cape Woolamai, Newhaven, Sunderland Bay, and San Remo.

On The Ground

Echidnas are still out and about, so please be careful when driving as they may sometimes cross a road!

Bush-stone curlew successful breeding

The Bush-stone curlew is critically endangered in Victoria, and locally extinct on Millowl (Phillip Island). At Nature Parks, we have two breeding pairs, and are excited to announce two chicks have hatched at the Koala Conservation

Reserve! The chicks will form part of a broader recovery program for the threatened species in Victoria. Be sure to pay them a visit to admire their fluffy plumage next time you are at the reserve.

Flora - Yellow (Austral) Sea Lavender

Once over the bridge onto Churchill Island, visitors are greeted with sprays of Yellow (Austral) Sea Lavender, *Limonium australe* var *australe* lining the roadside. The Yellow Sea Lavender is an endangered indigenous plant that grows in mangrove and saltmarsh plant communities. This is not to be confused with the common garden plant Sea Lavender, *Limonium perezii* nor the invasive environmental weed Sicilian Sea Lavender, *Limonium hyblaum*, both of which have purple flowers and originally come from the Canary Islands and Sicily respectively.

Monitoring of the Yellow Sea Lavender is carried out by rangers and volunteers each year during the autumn flowering period to ensure that the populations have not been invaded by Sicilian Sea Lavender. There are large infestations of Sicilian Sea Lavender west of Port Phillip but luckily only a few plants have appeared on Phillip Island.

In The Trees - Koalas

The Bluegum Koala Trail has opened at the Koala Conservation Reserve. This is a penned walking trail that showcases four koalas (one male and three females). It can be found at the back of the Koala Conservation Reserve, and features large eucalypts, acacias and other native vegetation. Take a seat on the boundary and peer in at the resident koalas or take a wander at ground level.

On Our Shores and In Our Waters

Penguins moulting: After the busy breeding season, Little Penguins are completing the process of moulting. This is when penguins go through a complete rejuvenation by replacing all their old feathers with new ones. This gain, however, does not come without pain.

The penguins must spend about 17 days ashore, suffering from the heat, covered in fleas and ticks and with no food or water.

Before the moult, they feed intensively and almost double their body weight to withstand the long fast. During moult, you will often see penguins onshore during the day as well as scatters of feathers around their burrows. After moult, the penguins are very thin when they emerge from their burrows with their sleek new feathers which ensure they are fully waterproof and prepared for long feeding trips in the cold winter seas. They head straight out to sea to feed, to enjoy a meal at last!

Seal Rocks news

Australian fur seal females and pups remain at Seal Rocks. They are currently moulting and females are coming and going to feed the pups whereas big breeding males have left and are off foraging out in Bass Strait. Some juveniles are still around - they sometimes wait to see if they can still get some milk from mum (either by being sneaky or if the recent pup has died).

The pups are getting bigger and spending more time in the water playing and practicing important skills - for example, throwing around a piece of kelp in the shallows allows them to practice the skills they need for throwing around an octopus or big fish once they wean from their mum.

Wildlife Rehabilitation

As always, the greatest thing you can do for wildlife is to keep it wild. These animals are very different to domestic animals, and have developed very specific diets, behaviours and habitat needs over thousands of years.

For more information, or if you find injured wildlife, you can call Phillip Island Nature Parks on 03 5951 2800 or Wildlife Victoria (24 hours / 7 days a week) on 03 8400 7300.

Sensory night

ON SUNDAY, April 30, Phillip Island Nature Parks will be arranging a sensory night. They are also planning sensory hours at their other venues. They would love you to join them, if you have the ability to!

What does sensory friendly mean?

A sensory friendly period is a way for your business to be more inclusive for people who may have sensory sensitivities.

By making minor modification to your operations during that time, you can allow those with sensory needs to feel more comfortable or confident to visit you, or may not visit at all without it.

I want to be a part - what next?

Just shoot Peta at PINP an email, letting her know if you are doing a day, hour, night and what modifications you are planning to do.

Not Sensory Certified and want to know more?

Call 0451 790 656 or email pwitig@penguins.org.au for more information.

Easter Holidays on Churchill Island

BRING the kids and take a step back in time this Easter break with a day out on Churchill Island.

Phillip Island Nature Parks are hosting a whole lot of fun this Easter break starting from Friday, April 7 until Monday, April 10. Family entertainment and live music will be performed over the long weekend from 2-5pm.

Showcasing artists:

- Good Friday: The Fruity Pickers
- Easter Saturday: The Ben Cook Trio
- Easter Sunday: Artists to be confirmed.
- Easter Monday: The Corz

Whilst experiencing live entertainment, those over 18 are welcome to enjoy a delicious wine tasting from Silverwater Wineries from 2-5pm. During the day a BBQ and fresh hot cross buns will be available at lunch time and treat the little ones to face painting from 10am - 12pm.

A unique wildlife experience is then available just before sunset with tickets on sale for tours on April 8, 9 and 10. Through an interactive tour with one of the Phillip Island rangers, learn about the Eastern barred Bandicoot and the incredible recovery program.

To book your tour today or see what's on this Easter school break visit www.penguins.org.au

EASTER AT CHURCHILL

Friday 7 - Monday 10 April 10am to 5pm

Amess Drive, Churchill Island

JOIN US FOR

- **GROOVY TUNES**
- **MINI-MARKET** with wine tasting, BBQ and hot cross buns.
- **'BANDICOOT BANDITS'** tours*, facepainting and more!

SCHOOL HOLIDAY ACTIVITIES

Friday 7 - Sunday 23 April

- **NATURE ART**
- **A BLACKSMITH'S QUEST**
- **OLD FASHIONED GAMES** on the Lawn

Entry included with Churchill Island ticket or a 4 Parks Pass**

*Available on 8, 9 and 10 April 2023. **Daily activities, complimentary for Churchill Island ticket holders. For schedule and TCs please visit www.penguins.org.au/events

Phillip Island
NATURE PARKS

Time Unwinds
CHURCHILL ISLAND

MALAYSIAN DELIGHTS

with a South Asian twist

Whether a night out with the family or celebrating a special occasion there is room for all at Pearl.

AMAZING Malaysian food at Inverloch's best-kept secret has received a twist.

A new menu showcases not only the Malaysian delights that customers have come to savour, but a new South Asian twist means there is even more to delight the senses.

From rich butter chicken sauces to curry leaf coconut broths, there is a biriyani and char sui to suit; filled with fresh ingredients and flavours beyond belief.

The Wagyu beef skewers are proving a popular hit, whilst weekly specials keep the appetite surprised.

Spectacular artwork adorns the walls as you enter with new beverages to tantalise the tastebuds including the cosmopolitan, coconut mojito and baileys espresso martini.

A good range of soft choices are also available with a wide selection of mocktails and even a house-made kombucha now also on offer.

For the warmer nights embrace the outdoor breeze, and for the wild and woolie weather destined to arrive stay snugged inside as you rest your legs and are transported to a foreign land.

The team are also incredibly excited to be hosting Paella at Pearl on April 9 (Easter Sunday).

Originally a dish made in Valencia (Spain) as a lunchtime meal for farmers and labourers, it is now a delicious

plate filled with seafood, eaten in the company of friends, neighbours and strangers with a drink and plenty of laughs.

Reservations are a must for this special event.

With function capability the restaurant can provide private spaces for groups to enjoy away from the main dining area, or if the bigger the better is your style, then the full restaurant can be booked.

Pearl is an out of the ordinary experience. A destination where one can enjoy dinner with an attention to detail, real customer service and unbeatable ambiance – and plenty of parking.

“Everyone who works here feels the same – we spend a lot of time at work in our lives and it’s important we enjoy it, and we want our customers to enjoy it also.”

Beef, seafood, chicken, pork, lamb, tofu and vegetables all feature across the select menu with gluten free and vegan options available.

There is also a new (but familiar) face in local resident, Anthony, that has joined the Pearl team as the Assistant Manager, and under his and Lillian’s guidance you will not be disappointed.

Heading into the school holidays make sure you book to ensure you don’t miss out.



INVERLOCH'S BEST-KEPT SECRET



Pearl

AMAZING ASIAN FOOD
You won't be disappointed!

Dinner Monday – Saturday | Lunch Saturday | Bookings recommended

5 LINDSEY CLOSE, INVERLOCH

Book www.pearlinverloch.com

Call 0493 136 351



Pearl Inverloch



Happily for 'Turn the Page' proprietors, Kylie and Brendan McDonald, there's still a place for a good book on holidays at Phillip Island.

Turn the page for holiday booking

LAZY holiday days and a compelling paperback still go hand-in-hand and fortunately for Phillip Island visitors and locals this time-honoured pastime has a happy home at Turn The Page book shop in Thompson Avenue Cowes.

Kylie Lindorff and Brendan McDonald took over the shop in January 2023, after moving to the area permanently about the same time after owning a house here for 10 years.

And between the holiday trade and loyal, local support, they've found that a book business can happily survive in the age of (almost) everything online.

"A lot of people still like the tangible feel of a book in their hand and the reading experience it offers," said Brendan.

As well as carrying a variety of reading genres, including a strong section of travel books, Brendan has also started a chapter (no pun intended) of the Australia-wide reading group for men called 'Tough Guys', although Brendan freely admits there's nothing particularly tough about this month's choice of reading, the classic German novel, *Metamorphosis*, by Franz Kafka.

"It's probably not what you'd expect them to go for, but it's interesting all the same," said Brendan.

"The idea is that every branch of Tough Guys reads the same book at the same time, and even if you're away on holidays, you can find out where the local chapter is and join their meeting for a talk about the book.

"We meet once a month, usually at a pub over a few beers, and a meal before hand

if you like.

"It's all wrapped up by 9pm so we're not home too late."

The Phillip Island Tough Guys Book Club has 17 members at present and they've already read some interesting books, including *Wake in Fright* and *The Glass Canoe*, although *Metamorphosis* is the most "left field" book they've tried so far.

It must be said, however, that it is one of the most written about books of the last century, with many commentators keen to plumb the depths of what Kafka was on about in a book where the central character, Gregor Samsa, wakes up one morning to find himself inexplicably transformed into a huge insect.

There hasn't even been much agreement about the interpretation of the first sentence in the book - "gigantic insect" or "monstrous vermin" and what, if anything, does it symbolise anyway.

In general terms, the books at Turn the Page in Cowes aren't quite so high brow with most of the latest best-selling novels on hand, collections by popular authors, a wide selection of children's books and, as mentioned, lots of travel books.

"Yes, everyone has started travelling again, and they're looking out for travel books," said Kylie.

As the summer days fade into the approaching winter, it's just as well that Phillip Island has a good selection of these cooler climate pastimes from warm cafés and restaurants, to galleries and walking trails, and a good book by a warm fire could be just what the doctor ordered.



Market 4212 houses fashion store Boho Inspired managed by Jac Allamby, selling a collection of clothing, shoes, and accessories in Dalyston.

Shop the ultimate boutique range

SITUATED in Bass Coast at Dalyston, Backyard World and Market 4212 are leading suppliers of SteelChief and LittleChief high quality outdoor living products, and home to a collection of customised goods from local creators.

Chantelle and Wayne operate the family run business and knew it was a space they wanted to share with others, inviting the operation of the local café managed by Emma Bruns, and opening the inside store as a daily market for unique suppliers - Market 4212.

With the intention of inviting innovative creators, Market 4212 houses Boho Inspired clothing and accessories, hand-made wax and air-fresheners from Sticky Mix Surf Wax, hand-made jewellery, candles, bath bombs, chopping boards, tie-dye and Hi-Vis clothing range, ShedNine apparel and skateboards and a range of surf boards from local shapers.

Outside, there is a selection of sheds, farm gates and aviaries built to the highest standard by SteelChief, with custom designs available, Backyard World work with each client to achieve great value, from order to installation.

"Our clients can choose their colour and request a quote for optional site preparation, this way we will pour the concrete floor and any surrounding pathways and install directly to the flat slab," said Chantelle.

"We also customise outdoor timber cubby houses, outdoor picnic tables, dog pens and kennels."

The rear studio showcases a display of Australian Christmas decorations

and tree-stands to prepare for the Christmas season, with handmade wooden toys available, including swing sets, slides, monkey bars and climbing frames.

Custom plans are also available in the LittleChief range, stocking a vast selection of cubby houses, all designed to encourage independent play and inspire creativity. The boutique cubby range offers anything from 'The Café to The Ninja' - made from plantation pine and available in a selection of colours.

"Our classic cubby house range has attachments available as optional extras, with the choice of an above ground elevation kit, where you can choose to incorporate side steps, a slide or even a sandpit," said Chantelle.

Extra fun options are also available upon request and the choices are endless, simply add a letterbox, fireman's pole, an elevation shop front, blackboard or even a scramble net.

Located at 4212 Bass Highway, Dalyston, Backyard World is open Wednesday to Saturday from 10am until 3pm or by appointment.

Market 4212 is open Wednesday to Sunday from 10am until 3pm and the café is open from 6am until 1pm Monday to Friday, so head on down for a barista made coffee and stroll through the boutique range at Market 4212, chances are you'll find what you're looking for.

To tour the display range at Backyard World call Chantelle on 0429 667 825 or visit www.backyardworld.com.au

KOONWARRA



Farmers MARKET

SATURDAY MAY 6

Great local produce & friendly atmosphere
1st Saturday of every month

Contact David
0411 413 716



COAL CREEK Farmers' MARKET

**SATURDAY, MAY 13
8AM-12.30PM
COAL CREEK CAR PARK**

Produce grown and made from the South Gippsland region.

2nd SATURDAY OF EVERY MONTH
Contact Nadine
0417 001 287



www.kfm.org.au



EASTER SALE

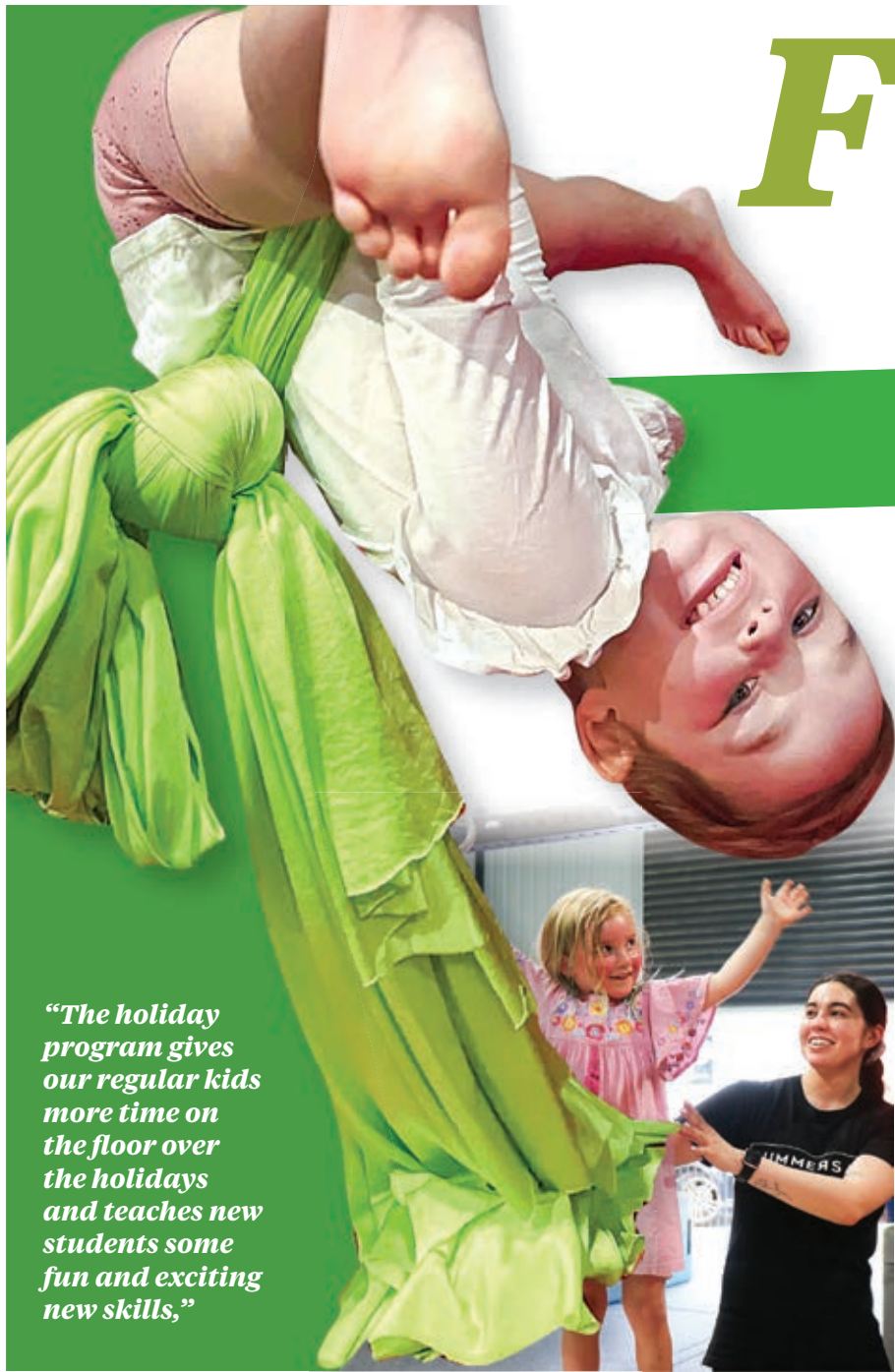
**10% OFF STOREWIDE*
FROM APRIL 7 - APRIL 21**

Items include: tie die, jewellery, boho ladies clothes, Shed Nine skate & surf wear, local photography, timber products, soy candles, make up, bath bombs, christmas decorations, wooden trays, toys and plenty more.

*Excludes sheds and cubbies

4212 Bass Highway, Dalyston
Chantelle 0429 667 825
or Wayne 0401 606 502





Flip'n good fun

THESE EASTER HOLIDAYS

"The holiday program gives our regular kids more time on the floor over the holidays and teaches new students some fun and exciting new skills,"

SUMMERSALT Gymnastics in Wonthaggi has the kids' fun covered over the Easter break, opening their holiday program from Tuesday, April 11 until Friday, April 21.

Running two programs to cater for a range of ages, owner Chelsea Caple has designed a convenient online timetable for grown-ups to pre-register their children's holiday session.

With no experience required, regulars and visitors to the coast are welcome to come along and join in the flippin' good fun; a perfect indoor activity to give the kids a chance to keep active, entertained and run off some extra energy!

Children will have access to the traditional gymnastics' apparatus, participate in circuits and games as well as complete challenges on the ninja course, of indoor trampolines and rock climbing walls.

On Monday, Tuesday, Thursday and Friday, Movement Educators will run two, two-hour sessions for kinder to teens, running from 9:30am until 11:30am and 11:30am until 1:30pm. There will also be one 2-hour session on a Wednesday from 11:30am until 1:30pm.

The kinder to teens class will be held as a drop off session, giving parents the opportunity to drop and go; head out for a coffee or visit those local attractions that the kids just aren't up for."

Two, one-hour Groms sessions will run every Wednesday from 9:30am until 10:30am and 10:30am until 11:30am for children aged one-year to pre-school.

The sessions for the Groms are designed to give them an opportunity to build their confidence, work on their concentration and their fine-motor skills and use their imagination; all whilst having the time of their lives.

"During our one-year to pre-school hour, grown-up supervision is required to help those little ones settle in and to give them a helping hand – having their parent or guardian there helps them build their confidence and enjoy their lesson," said Chelsea.

All sessions will be supervised by Summersalt Movement Educators whilst the kids enjoy the fun of the autumn program, helping them meet new friends, develop new skills, and enjoy their Easter school holidays.

"The holiday program gives our regular kids more time on the floor over the holidays and teaches new students some fun and exciting new skills," said Chelsea.

The holiday program will be \$15 for an hour session and \$30 for a two-hour session. Bookings can be made online at www.summersaltgym.com.au

All participants are recommended to bring a drink bottle and socks for the bouncy trampolines.

SUMMERSALT
APRIL
2023

LET THE KIDS
BOUNCE OFF
OUR WALLS
INSTEAD OF
YOURS THESE
HOLIDAYS

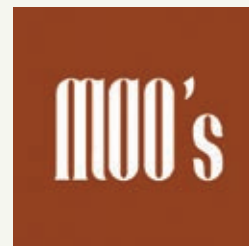
TUE 11 - FRI 21 APRIL

2HR SESSION \$30
SCHOOL/TEEN AGES

1HR SESSION \$15
PRESCHOOL

COME FIND US 5-6/120 McKenzie St, Wonthaggi
BROWSE US www.summersaltgym.com.au
EMAIL US missioncontrol@summersaltgym.com.au

LIKE US   BOOK ONLINE



For Brekky, Lunch, Dinner
Or Just Coffee and Cake
Your Local is Moo's

HOURS: Thurs to Mon: 8.30am – 4.30pm,
Fri and Sat Dinner: From 5.30pm, Fri Night Take Away: 5pm – 7pm



89 WHITELAW STREET, MEENIYAN | 03 5664 0010 | EAT@MOOSATMEENIYAN.COM.AU

The Poowong Hotel

*with fun and
a friendly
atmosphere*



Lunch Wednesday - Sunday 12noon-2.30pm
Dinner Wednesday - Saturday 5.30 - 8.30pm

**SENIOR meals available
Wednesday to Friday**

Open Monday and Tuesday from 3pm
Wednesday to Sunday from 11am

*All occasions catered for including
birthdays, weddings and engagements*

1 Ranceby Rd, Poowong p: 5659 2351
e: thepoowonghotel@bigpond.com w: www.poowonghotel.com.au



FARM FUN FOR ALL

at Hallston Valley Farm

WANT to experience the perfect slice of South Gippsland for Easter? From ute rides, sheep demonstrations and Easter egg hunts, you and your family can experience it all this Easter on the farm.

Even better the farm is only 15 minutes from Leongatha or Mirboo North!

Easter egg hunts for all ages including the little ones take place on April 9 and 10 at 11am and 3pm.

Why not get involved with the sheep while you're there, get to draft, weigh and learn about sheep and sheep farming at the sheep demonstrations every day at 2pm.

You can expect an abundance of animals from chickens to ponies at the farm.

You might even catch a glimpse of Theodore, the resident Strzelecki koala, who enjoys living in the Strzelecki gum trees that pepper the farm.

Hallston Valley Farm was established in 2015 and is a diverse regenerative 155 acre working farm in Hallston. The farm borders the picturesque Grand Ridge Road, Mount Worth State Park and the Tarwin river.

It is home to one of the biggest flocks

of registered and commercial Wiltshire Horn sheep in Victoria. Jill Noble and Gary Tie run Hallston Valley Farm, a diverse agritourism business and Wiltshire Horn sheep stud.

Hallston Valley Farm offers a unique setting for both animals and visitors alike.

Discover the farm this Easter from April 9-15 from 10-4pm.

Head to www.hallstonvalleyfarm.com or follow Hallston Valley on Instagram and Facebook to stay in touch with the farm.



Easter Art Show showcases local creativity

THE eagerly awaited annual Easter Exhibition presented by the Arts Society Phillip Island Region will be held this year at Newhaven College.

The venue is the spacious foyer of the new Performing Arts Centre at the College. The exhibition showcases the creativity of ASPIR members across a wide variety of media and genres. All the works are for sale. The Award presentations are on Thursday, April 6 from 7pm and works can be viewed from 10am to 5pm daily, from Friday, April 7 to Monday, April 10.

The exhibition provides a wonderful opportunity to discover the breadth of talent of the Arts community of Bass Coast and a chance to acquire an original artwork.

Newhaven College is located at 1770 Phillip Island Road. For more information visit www.aspi-inc.org.au



HOSTS: Heidi & Adam Marshall



- Sites • Cabins
- Camping
- Adventure playground
- Quiet parkland setting

Bourke Street, Korumburra 5655 2326 ktpsg1@gmail.com

Come in and see our Winter Collection

- YARRA TRAIL ■ MARCO POLO
- LANIA ■ VALIA
- DJANGO & JULIETTE

Influence Clothing
evening & casual clothing

ANZ Arcade, 32-34 Bair Street, Leongatha (IGA Carpark) **5662 5111**



Easter Farm Experience Extravaganza

Immersive farm experience meeting and feeding sheep, lambs, alpacas, horses, chickens, cows and calves. Some cuddles and pats available too!

255 Griggs rd, Hallston 3953

9 – 15 April
10am – 4pm

Bookings not required

\$20 per person

Family of four \$65

Children under 2 free

EASTER EGG HUNT FARM STYLE
APRIL 9 AND 10 AT 11AM AND 3PM.

UTE RIDES AROUND THE FARM.

PONY RIDES \$10
TAKE A SHEEP FOR A WALK \$5

SPECIAL NEEDS/REQUESTS?
WE'D BE HAPPY TO ACCOMMODATE!
GIVE US A CALL!

SHEEP DEMONSTRATION EACH DAY
AT 2PM. GET TO DRAFT, WEIGH AND
LEARN ABOUT SHEEP.

BYO PICNIC BLANKET AND FOOD
TO HAVE YOUR LUNCH AND YOUR
REFRESHMENTS.

BBQ FACILITIES AVAILABLE.

**HALLSTON
VALLEY**

FARM

Questions?
Call Jill on 0403 889 917
Email Jill at jill@hallstonvalleyfarm.com.au

RED HILL ENTERTAINMENT PRESENTS

GIPPSLAND COUNTRY MUSIC FESTIVAL

SATURDAY
22ND APRIL
2023

LARDNER
PARK,
GIPPSLAND



LEE KERNAGHAN
TROY CASSAR-DALEY
ADAM BRAND • BECCY COLE
SARA STORER • KAYLEE BELL (NZ)

JOSH SETTERFIELD • JADE GIBSON • GARETH LEACH
FREESTYLE MOTOCROSS (FMX) SHOWCASE
LOCAL COUNTRY SHOWCASE • BEN MASTWYK (MC)
DJ BRAT PAISLEY • LINDA PINK (LINEDANCING)

ALSO FEATURING: FOOD TRUCKS, SMOKEHOUSE BBQ, CARNIVAL RIDES,
ON SITE BARS, ARTIST SIGNINGS, GUMBOOT TOSS, COWBOY KARAOKE,
FACE PAINTING, MARKET STALLS, LAWN GAMES AND MORE!

CAMPING
AVAILABLE

GIPPSLANDCOUNTRYMUSICFESTIVAL.COM

BUSES
RUNNING



Australia's most loved country music identity and an outback icon Lee Kernaghan returns to headline the Gippsland Country Music Festival 2023.

get ready TO ROCK

at the Gippsland Country Music Festival

THERE is no doubt the Gippsland Country Music Festival has cemented itself as a formidable regional event.

Celebrating its third year in 2023, the country festival has already celebrated two sold-out shows headlined by the best of the best of Australian country music.

Now, the event is about to get even bigger by giving country music fans the opportunity to camp at the one-day event and really soak-up the atmosphere.

Moving to a larger new home at Lardner Park, organisers hope this will give music fans the chance to stay and play in Gippsland and explore the wonders the region has to offer.

In another coup for the Gippsland Country Music Festival, organisers have secured an enviable line-up, headlined by Lee Kernaghan - who launched the inaugural event in 2021 - and Troy Cassar-Daley. With Adam Brand, Beccy Cole, Sara Storer, Kaylee Bell, Josh Setterfield, Jade Gibson and Gareth Leach, there is something for all lovers of country music.

In addition, there are also many other experiences from a woodchopping

competition and freestyle motocross to line dancing, carnival rides, and market stalls.

There will also be a host of delicious food and drink vendors showcasing the local Gippsland region.

Organiser Aidan McLaren says the team have put together their dream line-up and day out.

"When we first talked about launching Gippsland Country Music Festival, we bounced around headliner ideas and Troy Cassar-Daley was straight away at the top of the list," he says.

"He's won a record 40 Golden Guitars, created so many amazing albums and songs over such a long period of time and his live show is just so engaging. To have him playing Gippsland Country for the first time is really something.

"Plus, to bring Lee Kernaghan, the Australian icon of country music, back to Gippsland is really special.

"After such an amazing response to his performance at our inaugural event, he's returning to headline by popular demand. Additionally, to be welcoming our first ever international act Kaylee Bell is a special moment as well, we

can't wait!

"Each of the other artists are incredible and we feel together they showcase the diversity and range of talent that exists in the Australian Country music scene. In total they have been awarded a mind-blowing 122 Golden Guitars between them, and we're very proud to have such an amazing array of country music talent playing the festival.

"We're also looking forward to the crowd being blown away by some incredible Gippsland home-grown country talent with the launch of the very first Local Country Showcase. It's the search to find the local country stars of tomorrow, with four winners having the opportunity to perform at the festival."

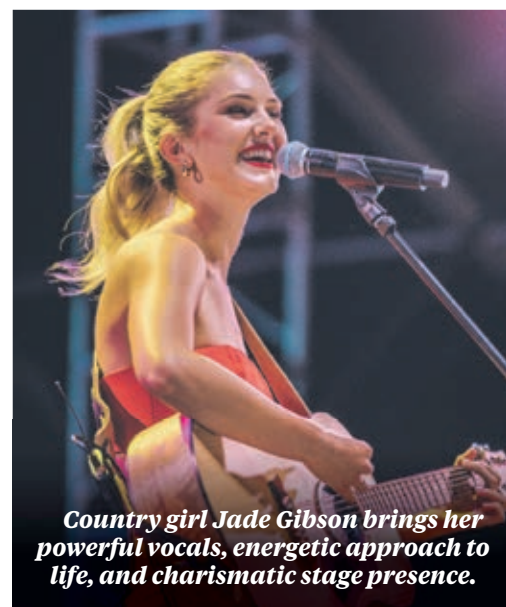
For the first time ever, Gippsland Country Music Festival will have camping onsite in 2023. There will be a limited number of sites available for music fans to camp for the weekend and experience the event.

"We are thrilled to have camping now available at our new home of Lardner Park," says Aidan.

"We always knew that camping would be such an incredible element to add to



Australian artist Beccy Cole has eleven Golden Guitars to her name, including five for Female Artist of the Year.



Country girl Jade Gibson brings her powerful vocals, energetic approach to life, and charismatic stage presence.

the festival and are really pleased that Lardner Park is able to offer us this in our third year. We know that fans travel hundreds of kilometres to attend the festival, and in addition to all the incredible local accommodation around us, it's exciting to allow music fans to camp onsite."

Situated just 12-kilometres from Warragul and 90-minutes east of Melbourne, Lardner Park consists of spacious green fields surrounding a central lake, all encapsulated by hills rolling on in the distance, making it the perfect new home for Gippsland Country.

The camping area is located on flat land with increased space and accessible facilities, ideal for establishing your temporary home. Hopefully it gives the opportunity for even more music fans to come and experience the festival.

"I know it's something that the audience wanted, and we're excited that Lardner Park is able to offer it for the first time."

Tickets are on sale now and there are limited camping spots available. For more information, visit www.gippslandcountrymusicfestival.com

**SOUTH GIPPSLAND
TANK
ADVENTURES**

TANK RIDES!

**OPEN SCHOOL
HOLIDAYS,
BOOKINGS
ESSENTIAL**

FOR BOOKINGS & ENQUIRIES: CALL 0407 611 203
OR EMAIL: CAMERON@TANKADVENTURES.COM.AU
TANKADVENTURES.COM.AU
2349 WOORARRA RD, WONYIP, VICTORIA 3962

**Happiness is a
CRAZY
SHAKE!**

**Did you know Mitch's Latte Lounge
has these sensational crazy shakes??**

With 9 delicious flavours including:

- Chock Fudge • Strawberry Crush
- Luscious Lime • Caramel Crown • Nutella
- Blue Heaven Delight • Rainbow Heaven
- Cookies and Crème • Rocky Road

**Find us at the Wonthaggi Plaza.
Ph. 03 5672 5175**



Radius Restaurant, a destination in itself

SET between wetlands and pristine beaches of the beautiful Bass Strait, Radius Restaurant at RACV Inverloch Resort is the perfect place to dine in comfort while reconnecting with nature.

Radius is a showcase of local, regional produce featuring an extensive wine list with local favourites.

A stunning light-filled space with floor-to-ceiling windows affording sweeping views of the coastline, Radius is a destination in itself.

Dinner is available à la carte seven days a week and there is also a calendar of special promotions throughout weeknights to enjoy.

Guests can enjoy family-friendly dining, paired with an extensive wine list that draws inspiration from the surrounding region.

From signature dishes from the grill to light barramundi paired with charred greens, the theme here is fresh.

Handpicked produce from regional suppliers, the carefully crafted Radius Restaurant menu features classic favourites perfect for all palates.

Opening Hours: Wednesday to Monday.

Buffet breakfast 7am - 10am, lunch 12pm - 3pm, dinner 5.30pm - 9pm

Tuesday: Closed

Bookings are essential.

To book, call 5674 0000 or email inverloch@resorts.racv.com.au.

From the BAKERS OVEN

THERE is nothing better than waking to the smell of freshly baked bread and warm toes. For the Bearded Baker of Inverloch's two children this was the way of life for three years whilst he baked in a temporary second kitchen upstairs until the recent conversion of an old woodshed/garage was transformed into a micro baker's delight: much to the kids' disappointment.

But how did a rugby loving, Coca Cola supply chain manager from Yorkshire become one of the most sought after sourdough bakers in South Gippsland?

"I came across in 2006 originally," Rob Mason smiled, as he cut the sourdough to size.

"The intention was to try and play some rugby league and watch the NRL."

Fast forward 17 years, a career with Coca-Cola and raising a family in Sydney, Rob and his wife, Ingrid, packed up and moved to Inverloch.

"We made the decision to move down here so the kids could be closer to their grandparents. Ingrid got a role that allowed her to work down here, whereas I knew my time was limited in terms of travelling into the city, so we looked at options..."

Business plans and cafes were tabled but the pair quickly discovered they would have to employ a sourdough baker, so the decision

was made to learn the craft themselves.

"I thought how difficult could it be? So, I enrolled at William Angliss and attended for about 18 months (of a two-year course) then COVID hit.

"I was working part time at that point in time and decided to take a month off work and figure out (sourdough) myself.

"We started Queen's Birthday weekend three years ago. Looking back, it's phenomenal in terms of where our sourdough was to where it is now - the consistency."

Operations initially kicked off at home with one Rofco oven. Quickly outgrowing a second oven there was no room for a third and the business migrated downstairs into the purpose-built micro bakery space last August.

Catch the Bearded Baker of Inverloch at Koonwarra Market on the first Saturday of the month, and weekly at the Kongwak Market from the end of April.

Read the full story at sgst.com.au



Recharge and reconnect with nature

Set between wetlands and pristine beaches of the Bass Strait, RACV Inverloch Resort is the perfect place to recharge in comfort while reconnecting with nature. On your break, dine at Radius Restaurant. A stunning light-filled space showcasing local, regional products and an extensive wine list. With sweeping views of the coastline, Radius is a destination in itself.

70 Cape Paterson-Inverloch Rd,
Inverloch, Victoria, 3996
03 5674 0000

racv.com.au/inverloch



RETRO, VINTAGE DESIGNER & ARTISANAL GOODS



17 Korumburra Rd, Wonthaggi (Opposite Bunnings)
0419 342 815 **The Wonthaggi Market**



SAIL AWAY

with me

Opening in 1938 Long Jetty serviced the town until decommissioning in 1980s. A restoration following the jetty's closure in 2003 has since seen many improvements to the 800-metre-long jetty with a smooth ride for cyclists.

SYNONYMOUS with fishing and boating, Port Welshpool is a must if you want to put your feet up and enjoy the sights with spectacular views from the water and shore.

Start your adventures at the Port Welshpool and District Maritime Museum with crackling sea tales and old wooden boat display, before taking a walk along Long Jetty. Extending into deep waters, ensure you have your walking shoes on as the historical jetty goes for miles...

After stretching your legs, head to the port and jump on your charter to explore from the sea or break out the fishing rods and try for your catch of the day.

If cycling or hiking is more your cup of tea, Port Welshpool is the final stop on the 109km Great Southern Rail Trail which starts in Nyora.



Delectable fresh produce is on display at Kongwak Market every Sunday with the heirloom variety available from Shane and regular varieties from Mick. There is also plenty of food to be enjoyed – whether you pack for a picnic or indulge in a treat.

Indulge and explore at the Kongwak Market

PACK your picnic basket and head to Kongwak for a spectacular day with the family.

Meander up and down the aisles of the vintage stores, collecting old books and records whilst you listen to the soothing sounds of a local musician.

It has been 20 years since Kongwak Market was established in its current form. A weekly ritual for regulars to browse, explore, stock up and relax. An activity to fill a Sunday for others.

As you journey through the gates you can head one of two ways – inside or around. Embrace the flow of having to be no-where as you wander and explore regular and guest stalls.

Stock up on fresh produce with a great selection of fruit and vegetables from Mick or perhaps the heirloom varieties tickle your fancy from Shane at Chippin Estate.

Grab a bacon and egg roll for sustenance from Meredith, and a coffee, as you meander to John for a custard filled donut or in coming weeks the Bearded Baker for your sourdough.

A baguette from Trulli and a The Native Food Co. relish or condiment from Lizzie, and you are halfway complete. Linda from The Little Farm Shop can

top you up with cheese, salami and kabanos amongst other smallgoods, jams and sauces.

Head further inside to Gomathy's for warm samosas and other delectable goodies as your picnic basket is brimming. The final stop before you venture back to the gardens in search for the perfect picnic space.

Relish in the sounds, rest the soul and break open all the delicious picnic treats – indulge like a King and share your lunch with a friend.

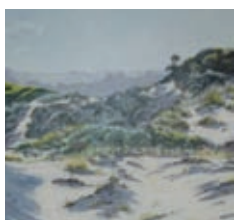
When it's time to move on head into the not-so-secret 'Secret Garden'. A true wonderland in the heart of Kongwak Market.

Stroll at your own leisure before heading into the nursery where you can pick up your own garden goodies from Carolyn.

As your adventures start to wind down make sure you top up any produce and don't miss Hamish's books, The Record Guy or the vast collection of great furniture and bric-a-brac from the two Peter's.

Come and stay for the whole day at the village square.

Kongwak Market is open from 10am to 2pm every Sunday.



Art by local artists from left, Adrian Johnson, Janice Orchard, Marion Quigley and Ellen Hubble

2023 Inverloch Art Show

Raising money to buy food boxes for Bass Coast Health to distribute to local families experiencing short term difficulties.

Easter Long Weekend

The Stadium at Inverloch Hub

Cnr A'Beckett and Reilly Streets in lovely Inverloch

Contemporary and traditional art on display and for sale
Art prizes are awarded in the different categories and introducing
The Blair Art Prize for the for the best in show.

Official Opening night is Good Friday April 7 from 7pm to 9pm. All welcome!
Show is open 10am to 4pm Good Friday to Easter Monday
Last day is Tuesday, April 11 from 10am to 12noon.

Contact us: inverlochartshow@gmail.com
Facebook: Inverloch Art Show
Website: www.inverlochartshow.org.au



With grateful thanks to our sponsors...



Open every Sunday

Inside and out, It's Fun ... Come!

10am - 2pm

- Collectables • Vintage • Retro clothes & wares
- Trash & Treasure • Pre-loved designer & brand clothing
- Produce • Books • Plants • Great food
- Coffee • Live music and more...

Kongwak Market is a smoke free event

For stalls 0417 142 478

14kms from Inverloch, 18kms from Wonthaggi
Wonthaggi - Korumburra Road, Kongwak

You'll never know what you'll find!

Parking available at Kongwak Hall, Tennis courts and near Kongwak Primary School.



Hop into the hunt at Coal Creek

EASTER Bunny is hopping his way to Coal Creek on Easter Sunday April 9 and will bring an abundant supply of chocolate eggs to ensure exciting Easter Egg hunting for undoubtedly energised youngsters.

He's teaming with Korumburra Lions Club, raising funds for the worthy projects to which it contributes.

The famous large rabbit won't just deposit his eggs and bound away, waiting around to meet the Easter Egg hunters.

Children under 12 years of age are encouraged to join the fun, with a cost of just \$5 each.

So everyone gets a fair go, the hunt will be split into 3 categories, with different areas and degrees of difficulty according to age.

There are two egg hunting sessions, 12 midday and 1.30pm.

There will be music, family games, a sausage sizzle and food and drinks for sale, along with a colouring competition, with doors open at 11.30am and festivities wrapping up at 3pm.

Bookings are open at [eventbrite.com.au/e/594187329297](https://www.eventbrite.com.au/e/594187329297) for what is sure to be a great family day.



Markets in town this Easter

THE Cowes Island Craft Market and Island Foreshore Market are happening on Saturday, April 8 for Phillip Island.

Other regional markets on Easter Saturday are the Coal Creek Farmers Market and Corinella Community Market.

The Loch Lions Village Market, Prom Produce and Craft Market and Wonthaggi Rotary Market are all scheduled for Sunday, April 9 and the Tarwin Lower Market will be happening on April 10.



GOING THE DISTANCE

on our great rail trails



Canberra cyclists Pete Dykgraaf, Faye Dykgraaf and Jenny Bowden said the highlight of their trip was stopping off in the "delightful" South Gippsland towns along the Great Southern Rail Trail including Port Welshpool, Foster, Fish Creek, Meeniyam and Loch

IF THE legendary founder of the Great Southern Rail Trail, Eric Cumming, had a vision in his mind's eye of what the trail might become in the future he might have imagined a visiting trio from Canberra who rode the trail last week.

Veterans of eight Great Victorian Bike Rides, and many of the rail trails around this state and others, they were coming back to an area they'd visited and they just loved what we've done to the place.

Stopping off at Port Welshpool for the night, on their way over from Sale, they walked out on the Long Jetty.

They listed the steep ride up to Foster as challenging but rated the view over Corner Inlet and Wilsons Promontory from the Hoddle Ranges as one of the highlights.

"We camped overnight on the Foster Showgrounds and stopped off at the town with the tea pots, Fish Creek, and Meeniyam along the way. Fish Creek and Meeniyam are lovely little towns, the people are friendly and there are some nice touches along the way like nice rest points and toilets.

"They've done a great job," said one of their number, Pete Dykgraaf, from the Canberra suburb of Tuggeranong.

"The bakery at Meeniyam is a real treasure and we also loved the covering of trees as you come out of Koonwarra on the way to Leongatha," said Jenny Bowden.

Together with Pete's wife Faye,

they continued on to Loch where they stayed the night and dined in at Olive at Loch while also walking around the town.

"It's been fantastic. The trail is so well looked after and there's lots to see along the way," said Faye.

Prior to joining the Great Southern Rail Trail at Welshpool, they left their cars at Sale and rode to Seaspray and then on to Yarram.

The rail trail extension from Yarram to Welshpool is under construction but not expected to be ready until December this year.

After Loch, they headed across country and picked up with the Bass Coast Rail Trail (which will eventually be linked back to Nyora) and rode on to Cowes on Phillip Island where they stopped for a light breakfast and coffee at G'Day Tiger and took the ferry from Cowes to Stony Point.

"We're going to get the train to Melbourne and then out to Traralgon and we'll ride the trails back to Sale to complete the round trip," said Pete.

"It's been great," he said.

The extension of the rail trail from Leongatha to Nyora was officially opened at the weekend, but it is already being heavily used by riders just like Pete, Faye and Jenny and when the likes of Eric Cumming and other driving forces behind the development of the rail trail, including John Kennedy and others, had a vision for what the tracks might be in the future – then this is it.



Great Southern Ride E Bike Store is now located in Meeniyam!

Pick up E Bikes from Meeniyam Store
Half and full day rides available.
Half day = 4 hours, full day = 7 hours.

See us in-store today at Meeniyam for a terrific stock of E Bikes & accessories!
Amazing ride options along the Great Southern Rail Trail.

Book online today!

GREAT SOUTHERN RIDE

www.greatsouthernride.com.au 91 Whitelaw Street, Meeniyam 0468 477 043



Emily Koenders has pulled out all the stops for her spectacular April display which will be her last major exhibition for a (very) little while.

Dreams really do come true

EMILY Koenders is not going anywhere as she invites a special new member into the family.

However the artist is looking forward to celebrating her 21st year in her own gallery with a little bit more r-n-r.

In what promises to be a spectacular exhibition and Emily's last major exhibition for a (very) little while, she has pulled out all the stops.

With views overlooking Wilsons Promontory, one meanders through an avenue of maple trees from the car park. Transported to another time a mix of dreamy old Federation meets modern country with chandeliers along Ruby-Fairbank Road.

Greeted by an incredible smile and beautiful soul, Emily meets one on arrival. On the special occasions you may even be greeted by an extra special member of the creative team – Matisse.

Whether visiting her gallery has been on your bucket list for a while or you're a regular, do not miss 'Wings in Autumn' running from April 1 to 30.

Filled with spectacularly detailed wildlife works, Emily is celebrating 21 years in her own gallery space.

"Loving nature is... to see luminous splashes of colour masterly placed on the wing of a bird, as light that lifts your spirit..."

"To watch birds soar against a cerulean blue sky and be raised up with them..."

"To see dappled light dance across the old wise gums and land on the lacy ferns, bejewelled by the robin, the wren, or whatever small miracle lives within. To feel the enchantment, the magic of the forest..." Emily begins.

"I was four – 1982 that's when I started."

Creating came second nature for the young artistic mind with pastel pencil the early material of choice.

Supported by her folks, Emily began

entering competitions, both for children and adults.

"I put this tiny little painting of the panda in (the adult's exhibition), and within minutes of opening we went to visit. For me to see it on the wall was an honour, but I walked in and there it was sold!"

"That's where it began – a little portrait of a panda."

Years of awards, exhibitions and recognition, Emily was the youngest to be accepted into the highly coveted Camberwell Art Show.

"You have to be judged to even get on the wall – it's the biggest art exhibition in all of Victoria."

"My family also hosted solo exhibitions in Caulfield and Doncaster for example that were opened by John Woods, Peter Hitchener and Val Jellay (Maurie Field's wife) which were enormous opportunities, where I had my works."

"The 80/90s art world in Australia was booming."

Portfolios of newspaper clippings, photographs and early samples of work sit open on the white ottoman as the autumn breeze glides across the hills outside Emily's gallery.

Raised in the art world and commencing her professional art career at the age of 14, it wasn't until later in her life that Emily's heritage was traced back to the famous Dutch master Vincent van Gogh.

But one of Emily's most precious memories involves Wilma, an Australian wombat.

"To have such a close experience with an Australian animal there are no words..."

"I was sitting there painting a pride of lions and Wilma was in her little pouch on my chest, that I had made out of my jumper. She'd sit there asleep, whilst I painted during the school holidays."

"When she woke, she put her little

nose out and tried to chew on the pastel pencil I was using – would you believe my mother got a photograph of it."

Emily is spirited by the beauty of her childhood, the views and scenery surrounding her home, and her imagination; she also happens to be musically trained.

A feature artist at exhibitions, Emily has also on multiple occasions demonstrated her talent for hyperrealism.

"I take 20 works with me, and as I did last Easter in Bendigo, I'll sit and demonstrate to people how I paint and talk to a lot of amazing people."

"That's the unexpected part of it – it's so beautiful because people open up to you from all walks of life, and you're yourself."

Once an empty paddock, now a phenomenal gallery and studio for Emily to work on her latest masterpieces, the dream on a hill has been a labour of love. And, when she is not downstairs, she can embrace the mezzanine bridge above, as her young son has done on a few occasions overlooking The Prom, the Gippsland hills and the thrilling storms and surreal skies filled with every colour of the rainbow...

A world rich in music, colours, light and immense focus on the wildlife subject at hand, Emily's art is a timeless gift from nature.

"When people buy a painting from you, they're buying a piece of you."

Four of Emily's exclusive works will be on display over Easter at the Bendigo Art Exhibition.

Do not miss Emily's current major exhibition 'Wings in Autumn' at Emily Koenders Art Gallery – 230 Ruby Fairbanks Rd, Ruby until April 30. Open Saturdays, Sundays and Mondays from 11am until 5pm, as well as all days over Easter including Good Friday, or by appointment.



Festival time at Yarram is worth the drive

THINGS are happening a little differently these days with the annual Tarra Festival in Yarram more a collection of events than one great, big, coordinated festival.

While the Saturday street parade may be missing from the list of activities, there's still a great time to be had at art shows, music events, markets and sporting events, plus, the chance to see the incredible array of murals by world renowned street and silo artist Heesco Khosnaran, and a stop off for fish'n'chips on the wharf at Port Albert.

Here's the program of events:

Good Friday:

- Tarraville Church service 11am
- Lawn bowls tournament 11.30am-2pm Yarram Country Club
- Yarram Football & Netball Club vs Yallourn North 12noon-9pm Yarram Rec Reserve (12noon onwards)
- Arts and Crafts Exhibition Friday-Monday 10am-3pm Yarram Scout Hall
- Pub raffle night 5.30pm-8.30pm Alberton Pub

Easter Saturday:

- Tarra Festival & Street Market 9am-1pm Commercial Road Yarram
- Evening Wear Display 11am-3pm Yarram Historical Society
- Art Exhibition 11am-3pm Yarram Courthouse Gallery
- Aeroclub Landing Competition 12.30pm-5pm Yarram Airport
- Easter Carnival 1.30pm-7.30pm Yarram Rec Reserve
- Alberton Cemetery Walking Tour 4.30pm-6pm Alberton Cemetery
- Rotary Club's Mick Harrington on National Tour 7.30pm-9pm Regent Theatre

Easter Sunday:

- Pancakes in the park 8.30am-11am Yarram Memorial Park
- Golf Tournament 10am onwards Yarram Golf Club
- Easter Picnic in the Park 3pm-6.30pm Port Albert
- Murder Mystery Night 6.30 onwards Regent Theatre (SOLD OUT)

Easter Monday

- Lions Club Market 8am-noon Yarram Rec Reserve.

Check out the Tarra Festival website for details at: <https://www.tarrafestival.com/>

FULL MECHANICAL WORKSHOP REPAIR CENTRE

- Land Boss UXV sales • Small engine sales & repairs
- CF Moto ATV/UXV sales • Origin Energy household gas deliveries

Husqvarna

E.W. & H.P. Fowler

WELSHPOOL OUTDOORS & ORIGIN GAS SUPPLIES

19 Main Street, Welshpool P: 5688 1304 F: 5688 1649 E: welshpooloutdoors@bigpond.com

ART EXHIBITION



'Wings in Autumn'

April 1 – 30

Open Saturdays, Sundays & Mondays

All Easter days including Good Friday (other days by appointment) 11am – 5pm

Emily Koenders
ART GALLERY

230 Ruby-Fairbank Road
FAIRBANK

0421 339 575



Whether a new build or renovation, Brad McCormack homes has you covered.



Step inside history for your Dream home

ESTABLISHED in 2020, Brad McCormack Homes is far from the new kid on the block, with owner Brad McCormack having been in the industry for well over a decade.

A custom builder, the team specialise in period style homes – from the Victorian era; for those more attune to styles think Californian Bungalows, Federation, Hamptons, Modern Farmhouse and Traditional. Decorative, sophisticated elegance of yesteryear paired with modern open-plan living spaces and amenities.

However, the team are no stranger to a contemporary modern build either.

Working with local draftsmen and architects, no two homes are ever the same.

“I started my carpentry apprenticeship as I wanted to build my own home,” Brad explained.

“In learning (the trade), I realised it was something that I

wanted to make a career out of. Having worked for other builders, I decided to take the leap in 2020 after attaining my builder’s registration.

“We are very much about accommodating our clients and their dreams. Not everything is possible to envisage on paper at the beginning which is why we start with some base specifications and have multiple on-site meetings with our clients throughout the build, so they have the opportunity to walk through their home at various stages, get a feel for the space and adapt changes as necessary.”

With most of their new builds on stumps, there are endless possibilities for clients with difficult or steep blocks.

“There are no limitations to the sites we build on – steep blocks or flat. We have the flexibility to make your dream come true.”

Based in Wonthaggi, the family-

owned business expands to the Bass Coast and South Gippsland regions, ensuring clients received a personalised service that is accommodating to their needs.

“We recently completed renovation work on a farmhouse originally built in 1904.

“Utilising reclaimed materials, the kitchen was renovated, and an outdoor alfresco extension was added.”

A skill in its own, the team were able to create a stunning masterpiece that withheld the original character of the home, whilst providing modern amenities and some much needed additional space to accommodate the family’s needs.

From timeless archways to elusive reading nooks, wainscoting to ornate fireplaces, Brad McCormack Homes truly bring old characters to life.

Keep your eyes peeled for a spec home coming soon to Wonthaggi.



Specialist builder of period style custom homes.

0428 496 266

brad@bradmccormackhomes.com.au



CDB-U 66015

JE2163



**HIGH QUALITY
CONCRETING SERVICES**

Driveways | Paths | Outdoor areas | Sheds
Plain | Colour | Exposed Aggregate

PHONE 0491 950 640

H18701

'AMAZING'

Parklands taking shape

PARKLANDS at Wonthaggi is continuing to take shape as more and more buyers look for a sea change along the beautiful Bass Coast.

Work has now finished on stage 5 at Parklands, which is the estate's biggest yet comprising 79 lots.

Parklea General Manager Corporate Jarod Mills said title registrations were expected soon and the first homes in stage 5 would start construction around May.

All but a handful of lots in the sought-after stage have been sold.

Stage five will also include a Metricon display home, which will begin construction in the next few months.

Mr Mills said space was still available in stage 5 for other builders interested in constructing a display home at Parklands.

Homeowners in stage 5 will benefit from Parklea's new design guideline requirement of Colorbond fencing.

"Parklea has transitioned to Colorbond fencing in all our new developments," explained Mr Mills.

"We have moved to Colorbond steel as a result of availability issues with other materials, but also because of its longevity.

Many clients would eventually end up having to paint their fences, but with Colorbond steel's terrific colour selection and durability, they are spared the hassle of repairing or replacing their fences.

"To help new residents, Parklea will

supply all rear and corner fencing. New home owners only need to finish the interlot fencing with their neighbours. This means most people will only deal with one or two neighbours, not four of five different parties.

"We think this shift will make Parklands look more polished and consistent."

Parklea recently moved the sales office from its flagship Officer development, Timbertop, to Parklands.

Mr Mills said the building was available to community groups wanting a space to meet.

"There may be a mothers' group that wants to meet for morning tea, or people may want a space to play chess or poker. They are welcome to use the sales office space," Mr Mills said.

With stage 5 well underway, Parklea will next turn its attention to starting construction on stage 7.

Mr Mills said stage 7 will be smaller than its predecessor, with 21 lots ranging in size from 512 square metres to 1,193 square metres.

He said the whole Parklea team was proud of the progress made so far at Parklands.

"Aesthetically the estate looks amazing. The quality of homes is magnificent and the park looks terrific. Parklands is starting to shape out the way we had envisaged," he said.

For more information on Parklands email info@parklandswonthaggi.com.au or phone 1300 966 842



STAGE 7 RELEASE

COMING SOON

LOTS FROM 512M² TO 1193M²

Ready for a seachange?

Build your dream home at Parklands Estate, Wonthaggi and experience a new style of living on the Bass Coast.

Perfectly located for your lifestyle:

- > 15 minutes to Inverloch
- > 25 minutes to Phillip Island
- > 1 hour to Cranbourne
- > 1 hour to Warragul

Register your interest now!

1300 WONTHAGGI (1300 966 842)
parklandswonthaggi.com.au





INVERLOCH
ACCOMMODATION

We can take the stress out of managing your holiday home

- ✓ Specialised and dedicated team
- ✓ Arrange cleans between guests
- ✓ Market & advertising your property over multiple platforms
- ✓ Booking Management
- ✓ Arrange maintenance
- ✓ 24/7 guest inquiries & support

Are you ready to book your next stay in Bass Coast & South Gippsland?

With a portfolio of quality homes to suit your budget and needs, you'll find the perfect accommodation. Book directly on our website or call the team.



6 Williams Street, Inverloch 03 5613 9053 www.inverlochaccommodation.com.au

Knowledge. Skill. Experience.

RayWhite

It's how our agents maximise the value of your property.

**A CHANGING MARKET MEANS
A CHANGING PROPERTY VALUE**

If you are thinking of selling now is the time



To sell your home with Australasia's leading
real estate brand, contact your local Ray White team

6 Williams Street, Inverloch 03 5662 9533 www.raywhiteinverloch.com.au



raywhite.com



Unlock your personal slice of *Island paradise* at Lifestyle Phillip Island



LIFESTYLE Phillip Island is live and ready to welcome you to its shores!

Experience a new kind of island lifestyle in this luxurious over-50s community, with extra-large, first-of-their-kind homes and multi-million-dollar amenities on your doorstep.

Showcasing considered designs and standard inclusions that are anything but standard, our homes set the tone for your lifestyle of relaxation and leisure. Above all, our homes are designed to help you live a low-maintenance life so you can focus on what's important – you!

Beyond your personal slice of paradise, you'll relish the unrivalled proximity to the beach (350 metres to be exact) and the community's network of lush, manicured gardens.

Located on Settlement Road in Cowes, Lifestyle Phillip Island is close to local shops, cafés, parks and reserves, walking trails, wineries, golf ranges and all the amenities and destinations you know and love.

Phillip Island is renowned for its captivating coastlines, world-class events, unique wildlife, and opportunities to explore nature.

Our community is perfect for active, adventure-loving locals who want to live big before and after retirement.

Perfected by our 20 years of experience and passion for creating enriching homes and communities, this

serene seaside oasis is our 25th community in Victoria.

It is designed to redefine the downsizing experience.

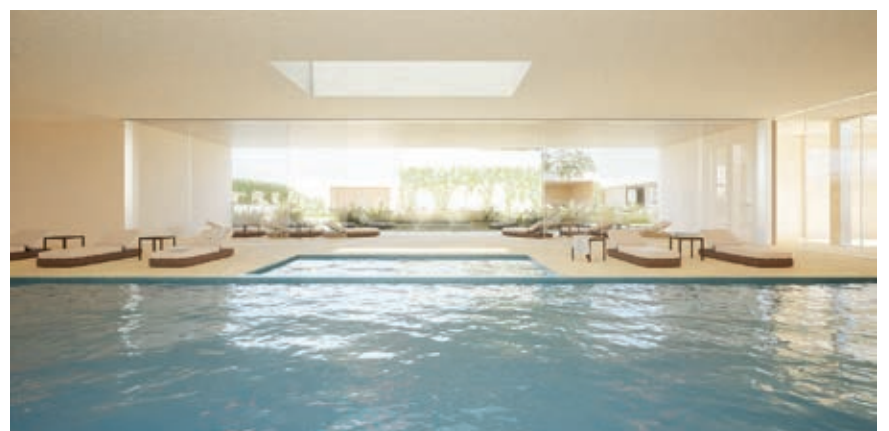
At Lifestyle Phillip Island, you'll enjoy the freedom, flexibility and opportunity to live life like you're on holiday every day. Soak your worries away in the heated pool and spa, explore the bay aboard the community boat, walk barefoot in the sand and spend quality time with family and friends as you live an independent life of comfort by the beach.

This picturesque coastal neighbourhood presents all the benefits that come with downsizing to a low-maintenance home in a secure community with best-in-class amenities and like-minded neighbours. Plus, with no stamp duty, council rates, water rates or hidden costs, you'll unlock your affordable lifestyle of luxury with peace of mind.

Embrace your endless island vacation at Lifestyle Phillip Island with new homes from \$470,000*

Call 1300 50 55 60 or visit our Lifestyle Lounge at 60 Thompson Avenue, Cowes, to discover how downsizing with Lifestyle Communities at Phillip Island can upsize your life.

**Prices are correct as of March 2023. Subject to change without notice.*



NO stamp duty **NO** council rates **NO** hidden fees



Artist Impression



XL Downsizer homes *at Phillip Island*

Lifestyle Phillip Island is the ultimate coastal community.

Perfected by our 20 years of experience and passion for creating enriching homes and communities, the serene seaside oasis will redefine downsizing for our homeowners.

Featuring modern, low-maintenance homes and best-in-class amenities, this coastal community presents boundless opportunities to live your life your way, surrounded by the many natural delights of Phillip Island.

Call 1300 50 55 60 or walk-in to our Lifestyle Lounge at 60 Thompson Ave, Cowes



Lifestyle
PHILLIP ISLAND

 **lifestyle phillip island**

The Wonthaggi Club

Be part of something special



Club Bistro

OPEN for Lunch & Dinner 7 DAYS

Mexican Monday

Enjoy a frozen margarita and some Mexican favourites every Monday 12noon-2pm and 5-8pm

Tuesday – Celebrity Parma Day

Try a different parma every week for only \$18 or \$20 with a pot!

Wednesday – Mixed Grill Night

Two mixed grills and a bottle of wine \$60
One mixed grill and a glass of wine \$33
5pm – 8pm

Thursday - Seniors Meals

\$12 seniors two course
Soup and roast - 12 noon until 8pm



Stage 1

bar and lounge

WITH 12 BEERS ON TAP

Great Australian Wine List, including some local offerings.

ALL DAY MENU

FROM 12PM – 8PM DAILY

TAB, KENO, FOX SPORTS

Join as a My1Club REWARDS Member and SAVE

16 McBride Ave Wonthaggi | **5672 1007**



The Clubhouse

BISTRO OPEN

Open for lunch and dinner Tuesday - Saturday

Snack menu available Monday

Brunch Sunday 10am-2pm

Bingo every Tuesday from 11am,

Thursday from 11:30am and Saturday from 12 noon.

Poker every Thursday and Friday night
and Sunday afternoon.

11 Dr. Sleeman Dve, Wonthaggi (Located at Wonthaggi Golf Club)

Phone 5672 1437 www.wonthaggiclub.com.au

